

Lake ice monitoring and modelling at **SYKE**

Johanna Korhonen

Vesa Kolhinen

Finnish Environment Institute

Needs for lake ice information

- Research (climate change and variability, biology)
- Transport and safety (military, ice roads, vessels)
- Recreation
 - Lots of Finns have summer cottages on islands in the lakes
 - Ice fishing, skating and skiing, snow mobiling etc.

Ice thickness and freeze-up and break-up observations

- Ice thickness
 - Manual measurements (drill and stick)
 - Longest time series from the 1910s
 - Approx. 50 sites, mainly in lakes, measured 3 times per month (10th, 20th 30th day of a month)
 - Official record is an average of three drilling holes
 - Total ice thickness, snow ice, black ice, snow, free bound

- Ice freeze-up and break-up
 - Observed at all ice thickness sites as well at most of water level station (visual observation)
 - Longest time series from lakes since the 1820s
 - Different stages (shores frozen/melted, ice within a observation area)
 - Published as daily maps, forecasts, status reports, statistics

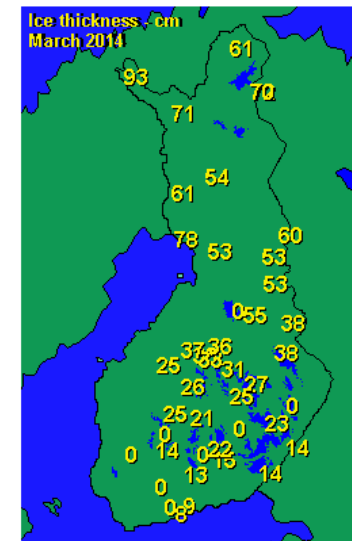


www.ymparisto.fi

Monthly hydrological reports | Finnish Environment Institute (SYKE)

THICKNESS OF ICE COVER

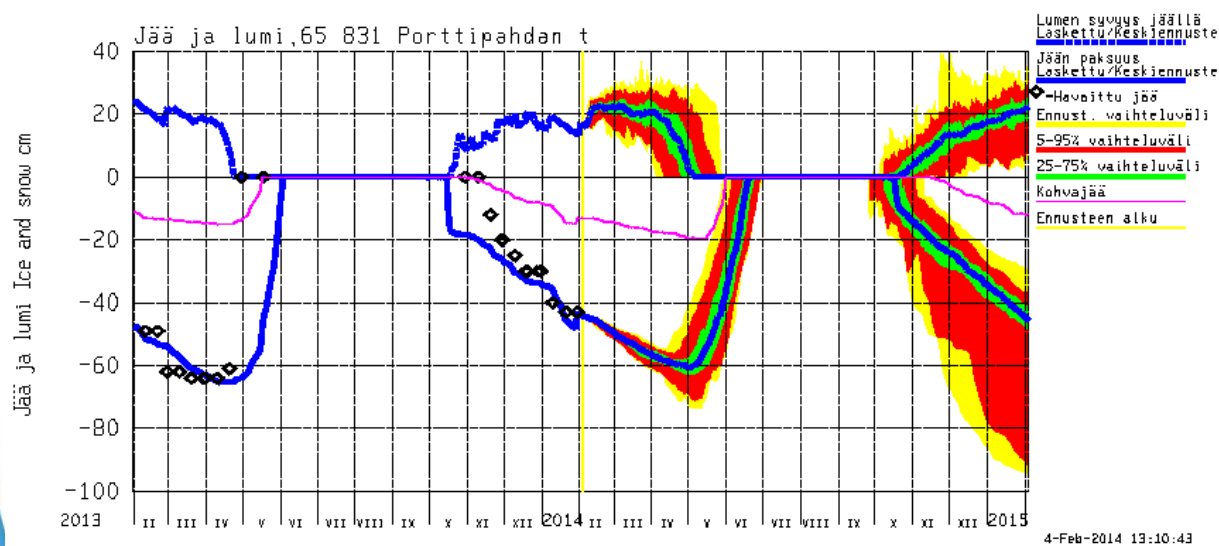
MARCH 2014



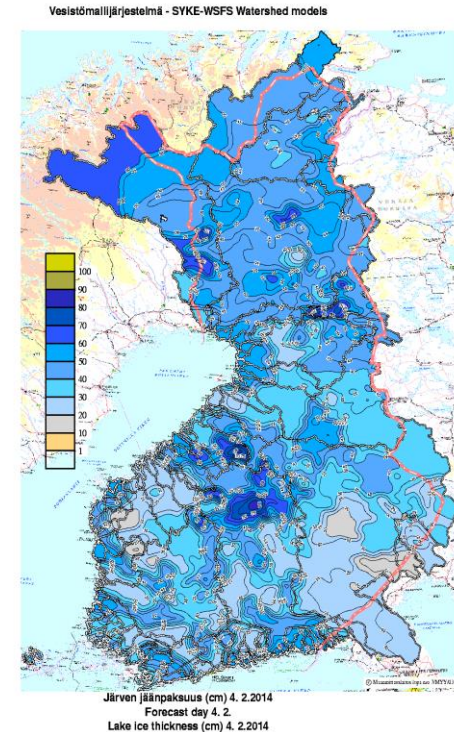
Ice thickness 30.03.2014

Ice modelling at SYKE

- Ice freeze-up, ice growth and ice break-up included in the WSFS
- Growth calculated based on the Stefan's law (heat transfer)
 - Total ice, snow ice, black ice growth + slush simulated
- Break-up calculation based on the degree-day factor



Ice thickness, modelled and observed)



Cryoland lake ice classification (LIE product)

- LIE used to verify the lake ice situation on daily basis (e.g request by citizens, several official ice status reports during spring)
- LIE provides snow-on-ice vs. clear ice information: very useful
- Access to Lake ice information must be fast and easy!
 - Cryoland interactive geo-portal too slow
 - Also original RGB-data would be very useful
 - Not every user has a capability of using GIS-system
 - Colour system of LIE not very good...fetching of the legend should be easier

SYKE finds png-images provided by NASA easier to use, e.g.

http://rapidfire.sci.gsfc.nasa.gov/cgi-bin/imagery/single.cgi?image=crefl1_143.A2014017092500-2014017093000.250m.jpg

→ Provision of RGB-quicklooks in 2015 through SYKE web-pages

